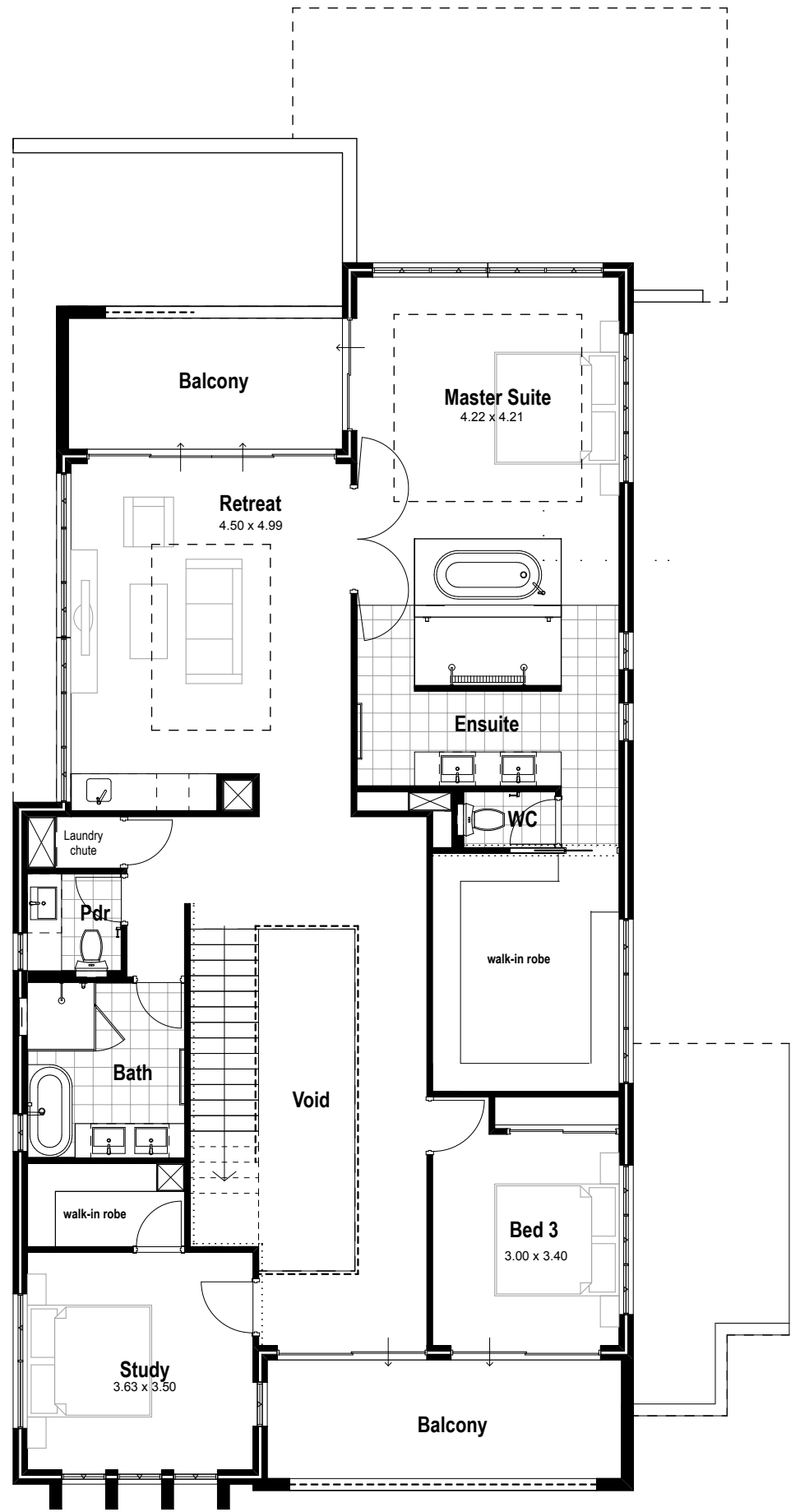


GROUND FLOOR PLAN

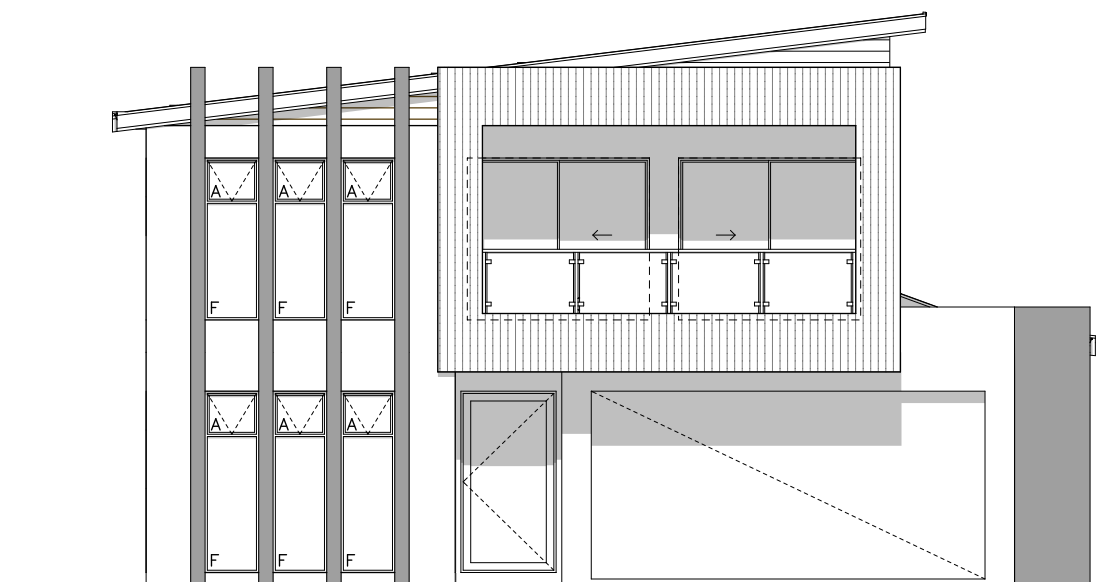


FIRST FLOOR PLAN

THE PINES

FLOOR AREAS:

GROUND FLOOR	171.78m ²
FIRST FLOOR	164.36m ²
GARAGE	39.68m ²
PORCH	7.80m ²
ALFRESCO	29.81m ²
FRONT BALCONY	12.47m ²
BALCONY	10.58m ²
TOTAL	436.48m²



FRONT ELEVATION